

# TECHNICAL SPECIFICATIONS

## CONNECTIONS



TOILET



SINK

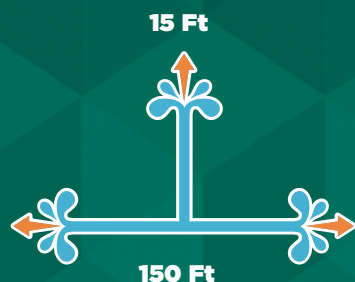
## APPLICATION



RESIDENTIAL



## PUMPING DISTANCE



# Saniaccess<sup>®</sup> 2 Macerator

## INSTALLATION BEHIND THE TOILET



Example of installation. Follow local plumbing codes for actual install.

## INSTALLATION BEHIND THE WALL



Example of installation. Follow local plumbing codes for actual install.

The **Saniaccess2** is a **1/2 HP pump system** used to install a half-bathroom up to **15 feet below the sewer line, or even up to 150 feet away** from a soil stack. It incorporates a **macerating system** which can handle human waste and toilet paper in residential applications. The blade is made out of a hardened stainless steel material which **eliminates the need for any service or replacement**.

- **Discharges the waste through a 3/4" or 1" rigid pipe. A non-return valve is included** on the discharge elbow assembly provided with the system. This elbow can be rotated 360 degrees depending on the discharge installation.
- Has been designed with a **1-1/2" vent connection** on the side of the pump housing. All plumbing codes require connection to a vent system. Please note that the vent system should be a two-way air vent as air needs to freely flow both ways. Note: The use of mechanical vents, air admittance valves or similar devices is not permitted.
- Must be connected to **Saniflo's 1.28 GPF / 4.8 LPF rear discharge toilet**. These toilets come in round and elongated (ADA compliant) models. More technical information on page 6.
- Will also discharge **gray water from a sink**. The wastewater will drain into the system via a 1-1/2" inlet which is located on the side of the pump housing. Note that either side connection can be used for the vent or as an inlet.
- Designed with two **easy access service panels** located on top of the pump. On one side of the pump you can easily access the **electrical components and the level sensor**. The other side allows access to the macerating blade for **easy removal of foreign objects**.



### Toilet Tank (Part N° 005)

Insulated 1.28 GPF / 4.8 LPF toilet tank equipped with all internal valves. For more information, please turn to page 6.

### Round/Elongated Bowl (Part N° 083 or 087)

Rear discharge toilet with 16-3/4" seating height (Elongated bowl is ADA compliant). For more information, please turn to page 6.

### Extension Pipe (Part N° 030)

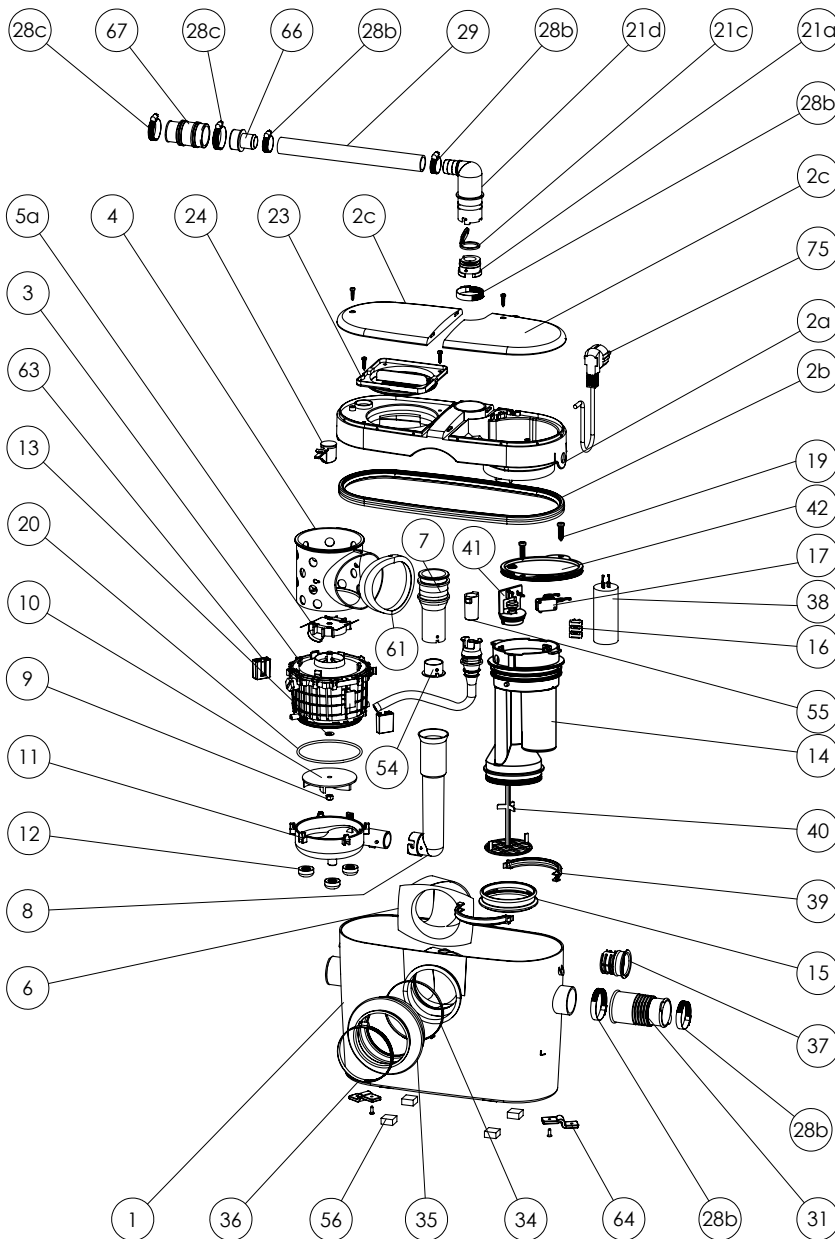
18" long PVC pipe with internal gasket used to hide the pump behind the wall. For more information, please turn to page 51.

### Saniaccess 2 (Part N° 081)

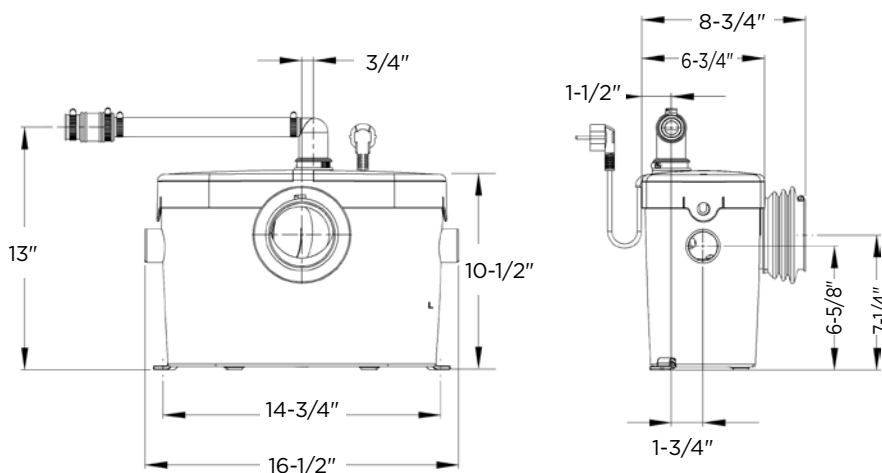
Macerating pump for residential applications. Ideal for creating a half-bathroom in a basement, attic, garage, pool house, etc.

# TECHNICAL SPECIFICATIONS

PLEASE CALL US TOLL-FREE AT  
**800-571-8191 (US) / 800-363-5874 (CDN)**  
 TO PURCHASE PARTS REFERENCED BELOW



## DIMENSIONAL DRAWINGS



Choose any sink and enjoy your dream half-bathroom.

## TECHNICAL SPECIFICATIONS

### Pump type:

Macerator

### Electrical:

120 V - 60 Hz / 4.5 Amps (Max)

### Motor:

0.5 HP oil-filled thermally protected motor

### Capacitor rating:

45 microfarad

### Operating Temperature:

104°F (110°F Max.)

### Power cord length:

51 inches

### Noise level:

≤ 53 dBA (Lp) (measured at 3 ft.)

### Discharge pipe diameter:

3/4" or 1"

### Discharge rate at 15 ft:

17 GPM

### Discharge rate at 3 ft:

27 GPM

### Shut-off head:

30 ft.

### Normal running time:

10-12 seconds

### Capacity:

2.3 gallons / 8.7 liters

### Inlets:

1-1/2" (side), 1-1/2" vent (side)

### Method of activation:

Membrane/microswitch

### Weight:

15 lbs / 6.8 kg

### Certifying agencies:

CSA (IPC, NSPC), IAPMO (UPC)

### Recommended accessories:

Descaler

### Connections:

Rear outlet toilet, sink

